



CLOUD INNOVATION WORLD CUP



THE FINALISTS

Season 2013/14



CLOUDEO

gemalto
SECURITY. BY DESIGN.

EuroCloud

SIA

CLOUD
WORLD FORUM

URBAN INFRASTRUCTURE



THE VENIOS ENERGY SOLUTION

by Venios

Venios is an IT services company providing holistic software solutions tailored to the requirements of the energy industry. Based on our proprietary, cloud-based Geo Information System (GIS) and our extensive knowledge of big data systems, we are able to detect and analyze critical conditions in power grid infrastructure (including individual forecasts for all photovoltaic arrays in Germany with live data feeds). The current power infrastructure was not designed for decentralized electricity generation and the resulting discontinuous feed-in from the low-voltage domain. It follows that the growing integration of renewable energy is increasingly leading

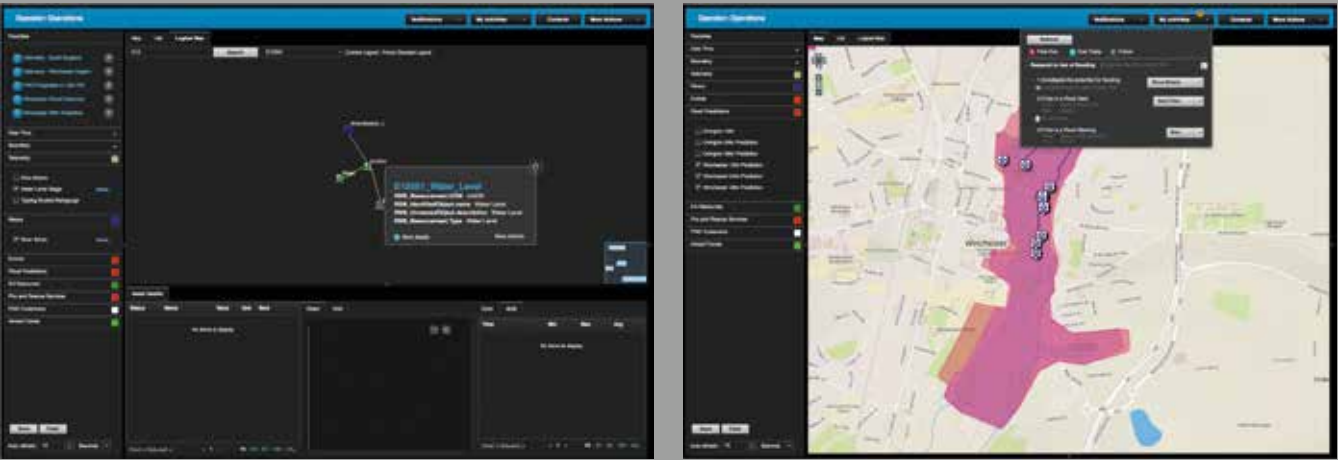
to instability in the power grid. In order to tackle this problem and to minimize the costs associated with grid upgrades, Venios has developed the Venios Energy Solution (VES) with the needs of distribution and transmission system operators in mind. Our software is able to identify critical areas in the power grid and provides grid operators with the detail and grid transparency required to optimize both grid maintenance and expansion, while also enabling the control of intelligent grid components (e.g. variable transformer substations, energy storage systems, etc.). Our solution helps system operators and other stakeholders to assess investments into power infrastructure and to find the optimum balance between investments in conventional grid upgrades and in the intelligent utilisation of existing infrastructure.



VENIOS
Uniting IT and Energy

Venios GmbH
www.venios.de

IBM



DIGITAL DELTA

by IBM

In a country where advanced warning about impending heavy rains or flooding can save money and, more important, lives, it is essential that critical information reaches the right people at the right time.

The Water Agency Rijkswaterstaat decided to partner with several public and private sector organizations to pilot a research program called Digital Delta. The program focuses on using open data to improve information sharing and insight among agencies and research institutions that focus on water management. The Digital Delta cloud platform facilitates participating partners to collect, integrate and analyze current and benchmark information from

multiple sources. It will address concerns ranging from drink water quality to the increasing frequency and impact of extreme weather-related events to the risk not only of floods but also droughts. By modeling weather events, the Netherlands will be able to determine the best course of action including storing water, diverting it from low-lying areas, avoiding saltwater intrusion into drinking water, sewage overflows and water contamination. On the cloud platform data, services, models and algorithms can be shared, reused and made readily available to all relevant parties in hundreds of different water projects across the world.



IBM
www.nl.ibm.com



DAZZLETEK

INTELLIGENT LIGHTING CONTROL SYSTEM

by Dazzletek

Dazzletek provides Intelligent Lighting Control Solutions that can exceptionally save energy consumption in Public Lighting and Industry Lighting.

Our full wireless solution can be used with any brand outdoor lighting fixture, and does NOT need adjustment of the fixture due to our advanced (internal) antenna innovation. We use an Open-Source Back Office and we maximize our customers' ease of mind by supplying Plug&Play Apps to install, configure and monitor their Lighting Systems. Saving energy and providing light where and when it is needed is what the Dazzletek solution is all about.



DAZZLETEK BV
www.dazzletek.com



MOBILITY



Smarter. Driving. Every Day.

Connect your car to your smartphone, and unlock enhanced performance, cost savings and social driving.

dash



DASH - DRIVE SMART

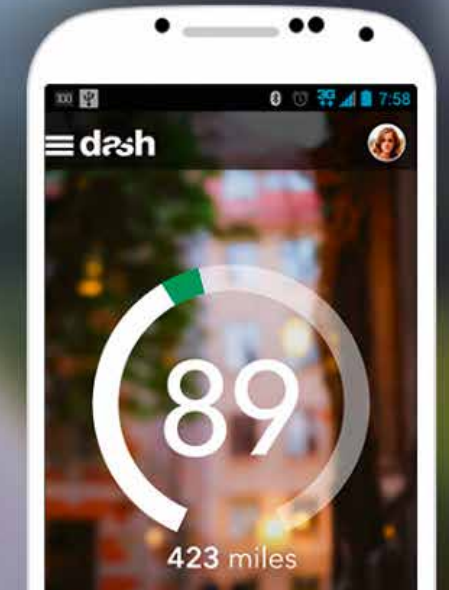
by Dash Labs

Dash is a connected car platform, which makes any car a 'smart car'. Often described as a 'FitBit for driving', the product is a hardware and software solution, that uses a low-cost, self-installed device that easily plugs into your car and allows you to connect your smartphone to the vehicle.

Dash combines data from the engine readings, with your smartphone sensors and your demographic data, together with information about weather, traffic and location. The intelligence and insights allow Dash to make driving safer, greener, more affordable and more social. Launched in the US first on Android, they are gearing

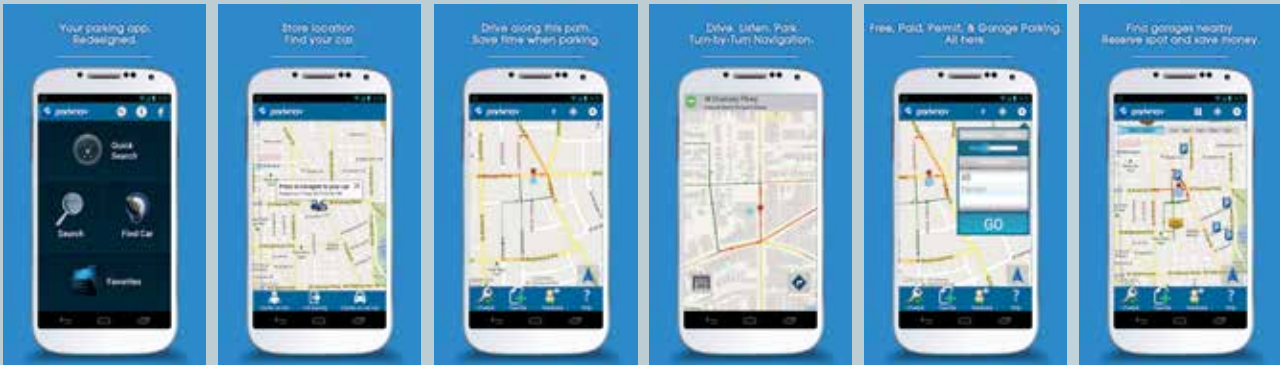
up for their iOS and international launches next month. Already integrated with IFTTT, they are opening their API to third party developers this summer, which will allow enterprise partners, like insurance companies and fleet managers, to seamlessly leverage the driving data platform, or 'automotive graph'.

Dash is a venture-backed, Techstars company, with investors including the CEOs of FourSquare, MakerBot and Path. The HQ is in New York City. Check out more at www.dashmobile.co



dash

Dash Labs, Inc
www.dashmobile.co



PARKNAV – STREET PARKING REINVENTED

by Parknav

Parknav is a parking solution which reduces the time spent searching for available parking in today's metropolitan areas.

When using Parknav, drivers save time, energy and money and find parking faster than ever before. Additionally, Parknav helps cities become greener by reducing the environmental impact of cars driving around searching for available parking.

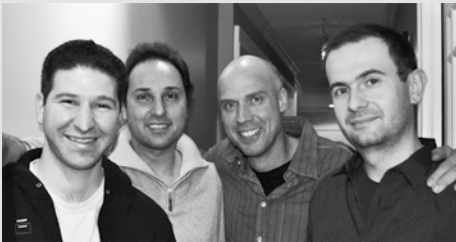
Parknav already has over 50,000 users and is already available in Chicago, San Francisco, Munich and Hannover. More cities will follow shortly.

How does it work? Think Waze meets The Weather Channel for parking. No expensive sensors, but a mix of historical data and crowdsourcing paired with machine learning, artificial intelligence and a predictive component. As a result, drivers following Parknav's optimized search route save up to 70% of their search time when looking for available on-street parking.

Additionally, drivers can also save about 50% of the cost in selected off-street parking lots and structures in selected cities.

Parknav is currently seeking capital to launch new markets, optimize the service and prove virality of the solution in all markets.

Parknav has already delivered a proof of concept for a car manufacturer in Germany and also received seed investment from the Scout24 Group in Germany.



Parknav
www.parknav.com



TRANSPORTATION MOBILE TICKETING

by Corethree

Corethree's Core Engine is a powerful solution for integrating data, services and analytics for mobile and back-office. Using cloud services it's highly scalable and flexible and ties together big data, payments, CRM / loyalty, and focused business intelligence to create connected services on-the-fly.

We provide a simple and robust hosted SaaS platform to make new and existing applications, communications, control and operations mobile and scalable for the future. Core Engine creates efficient solutions that save money, resources and boost organisations green credentials. We

have the tools to link IT with customers and staff, simply, quickly and with low overheads.

Recent projects include mobile ticketing for First Group UK Bus, one of the largest transport operators in the UK. Mobile payments and customer services for Charge Your Car, the UK's largest electric vehicle charging company. Mobile loyalty for Q-Park one of the largest car park operators in Europe and Transport for Edinburgh, first m-ticketing solution for a UK tram network.

corethree®

Corethree Ltd
www.corethree.net

ICT BUSINESS SERVICES



CLOUD PHONE SYSTEM

by RingCentral

RingCentral Office™ is a complete cloud business communications solution. It keeps employees connected to customers and colleagues no matter where they are working, and regardless of the device they are working on – their smartphone, tablet, computer or desk phone.

RingCentral Office includes voice, fax and conferencing, and allows employees to seamlessly switch between landline and mobile all from one number and user profile. The solution also offers cloud storage integration so employees can send documents from Box, Dropbox and Google Drive; and the service also offers CRM integration with Salesforce.com.

With no upfront costs, companies can evolve their business communications from a CapEx to an OpEx model, and scale as their company grows.

RingCentral Office benefits:

- Call management, conferencing and mobile minutes in one, low monthly price plan.
- Make and receive unlimited calls and faxes.
- System administration and user preferences are managed from the RingCentral mobile app, for quick and simple activation.
- Porting, implementation, support and upgrades are all free of charge.

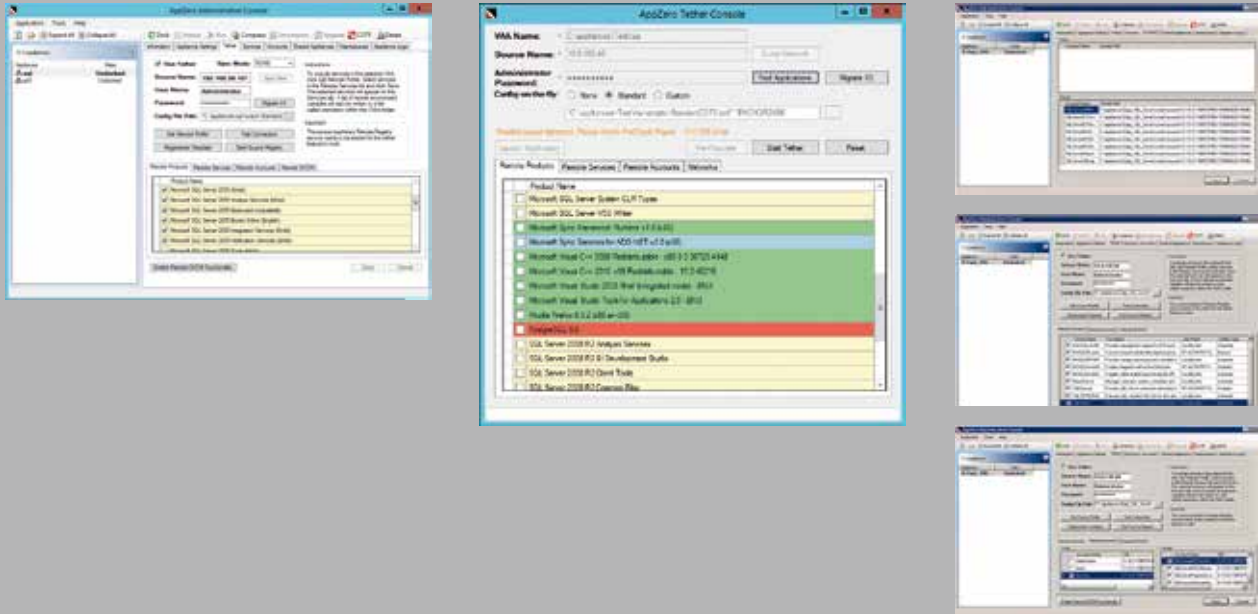
- A mature platform with 99.999% uptime – trusted by over 300,000 businesses.

RingCentral is headquartered in San Mateo, California and its UK headquarters are in Maidenhead.



RingCentral, Inc.
www.ringcentral.com

APPZERO



APPLICATION MODERNIZATION

by AppZero

AppZero, the fastest, most flexible way to move server applications, can migrate your applications from an old Operating System to a newer one in the datacenter or cloud. Microsoft recommends AppZero for application migration of various applications from Windows Server 2003 to either Windows Server 2012 or Windows Azure. Encapsulating Windows applications in VM/OS-free packages, AppZero's patented software moves complex server applications with ease - allowing you to modernize your infrastructure.

AppZero moves Windows production server applications from a source machine -

physical or virtual - to any target server, in any cloud or datacenter. It separates an application from the operating system and machine, copies it and reinstalls the application on a new machine. This approach allows you to modernize [upgrade] the operating system and move to the cloud in one step; important to consider as Windows Server 2003 faces end of life.



AppZero
www.appzero.com

POLKAST

Managing Mobile Devices Has Never Been Easier.

Give your employees complete mobility and instant access to the right information.

It only takes 2 minutes to set up!

MAKING REMOTE WORKING SECURE, RESILIENT AND RELIABLE

by Polkast

While public clouds like Dropbox, iCloud, AWS have become household names for consumer cloud storage, we have found that certain verticals in the enterprise market demand a higher security solution to make remote working secure, resilient and reliable.

Businesses want the convenience of remote access, but cloud storage may not be permitted by regulatory standards of an industry or company. And some files are so large that they need a local drive. Organizations that distribute content on both private and public clouds need a

comprehensive solution that can address diverse security/policy requirements. Polkast offers an innovative solution to address the security, cost, and network issues that have become a constant concern.

Polkast's private cloud runs on Windows, the server operating system that already owns 70% market share in the business world. With on-premises file storage, permission access, and remote wipe capabilities, Polkast provides a high-security business solution for store/access/share. We offer an on-premises private cloud

that allows IT departments to fully manage the lifecycle of all business content. It can function behind the firewall, handle volumes of data, and address most of the network and security issues faced by big businesses. Server 2003 faces end of life.



Polkast LLC.
www.polkast.com

SMART LIVING



TEDDY THE GUARDIAN

by ID GUARDIAN

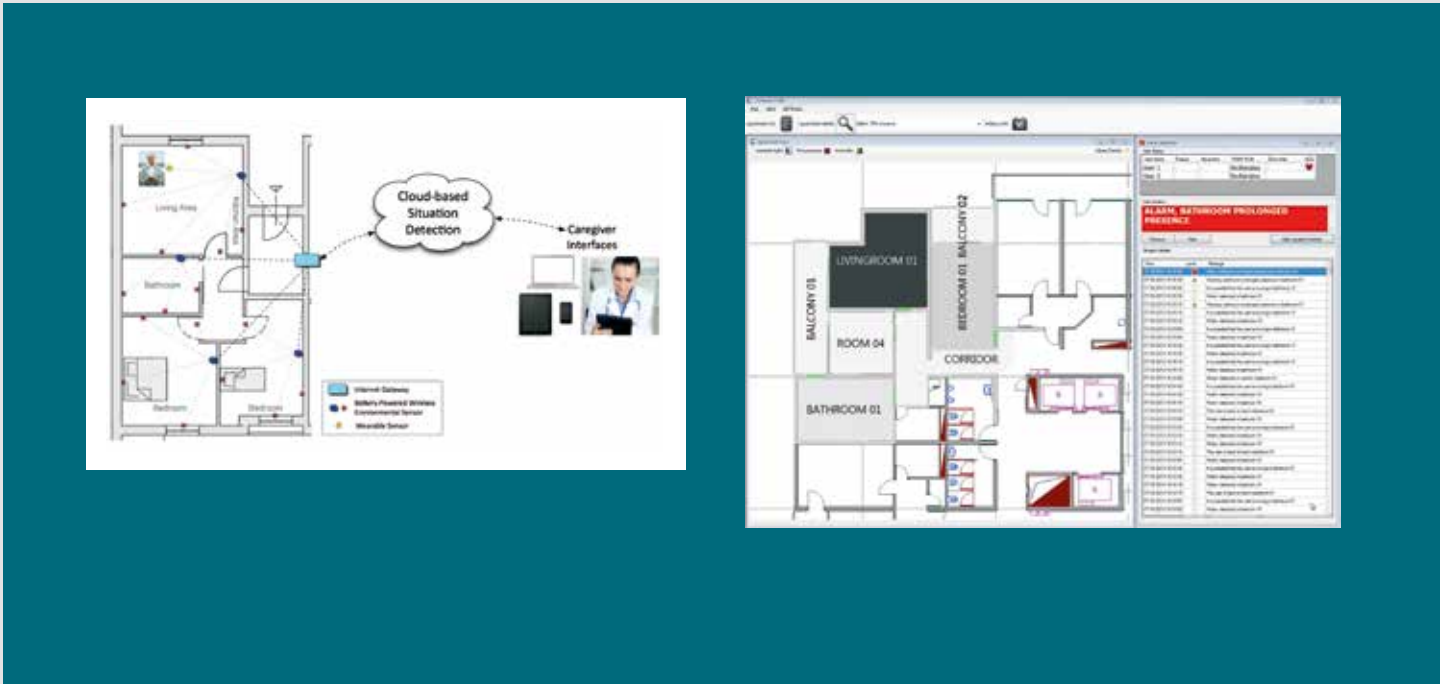
Teddy the Guardian is a plush teddy bear with built-in medical sensors tracking child's vitals through smart paws and wirelessly sending recorded data to mobile or web application where it is visualized and managed. The product integrates medical sensors disguised and strategically placed in a plush toy that serves to remotely send information to a parent or pediatrician about child's heart rate, temperature and oxygen saturation levels.

The big idea evolves around redefinition of pediatrics by taking advantage of creativity and what exponential technologies have to offer and turning the necessity of visiting doctor's office into "Disneyland meets

hospital" experience. Emotional stress and unwillingness to encounter unfamiliar and extremely non-child friendly medical devices in an environment they are not comfortable are the feelings significantly visible with 80% of children who experience certain level of stress when they enter hospitals. The problem occurs when HR or body temperature increase as a result of above defined situations, which leads to skewed medical data and potentially unreliable picture of the child current health condition. As the first ones on the market we have introduced a product that combines new exponential technologies lying behind medical devices with children's favorite plush toy.



ID Guardian Ltd
<http://teddytheguardian.com>



CONTEXTA-CARE
by Contexta Evo

Contexta-CARE is a sophisticated system that enables close monitoring of a person's normal activity in her/his living environment. It can preventively detect situations that might evolve into a potentially dangerous outcome and actively signal critical events, e.g. falls.

Contexta-CARE is active 24/7:

- it guarantees a high level of attention to critical situations with very low false alarms;
- it allows close control of user's needs also from a remote location;
- it increases efficiency and effectiveness of support personnel, therefore optimizing costs;

- it focuses on prevention and it is able to actively detect events that can lead to a critical situation, raising an immediate alarm.

and based on two main components:

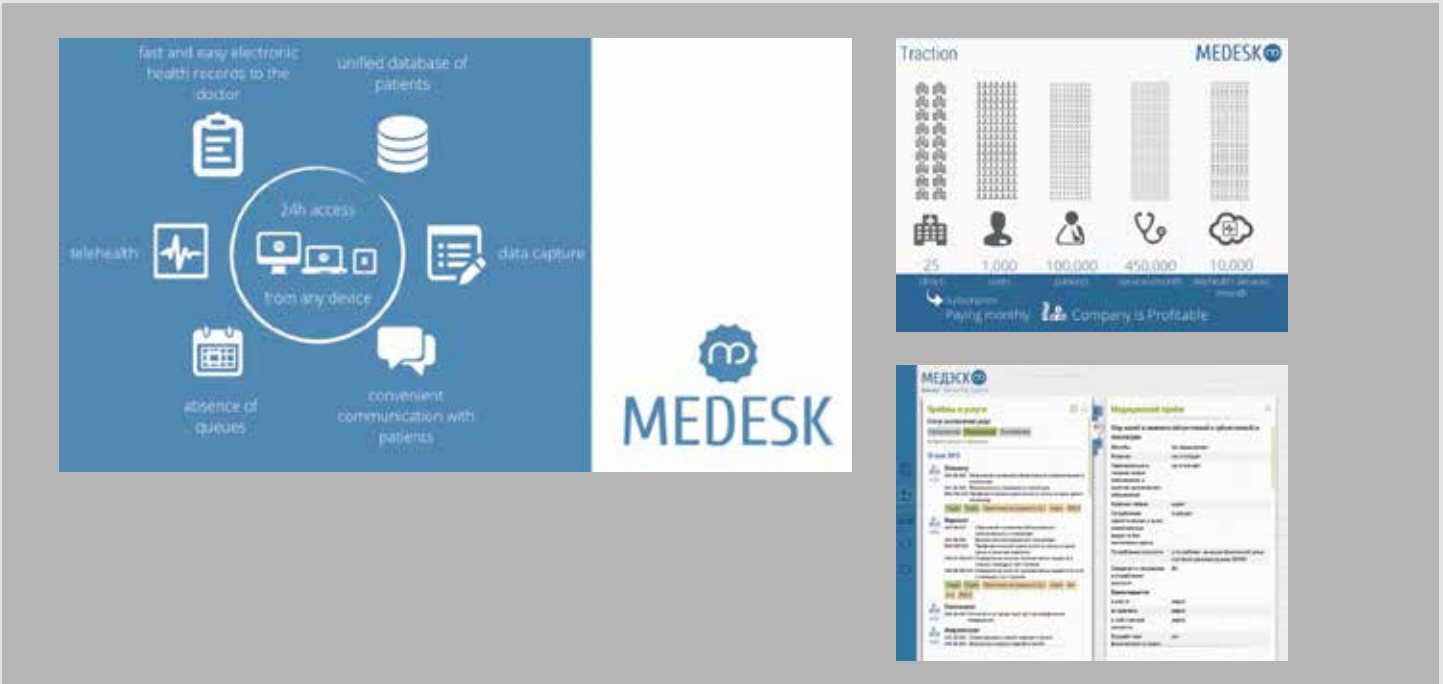
- A Wireless Sensor Network (Contexta-NET) based on the IEEE 802.15.4 protocol and composed of environmental and wearable sensors. The WSN is used for gathering a large amount of data delivered by sensors. Small, light and non invasive sensors can be carried by the user.
- An intelligent, cloud-based, data concentrator, that analyses and stores the data; it detects user location and movements, situations, anomalies, emergencies and raises alarms.

All data processed by Contexta-CARE are available on Internet, through user-friendly web, mobile and desktop GUIs.



contexta **evo**

Contexta Evo SA
www.contexta-evo.ch



MEDESK CLOUD
HEALTHCARE PLATFORM
by MEDESK

MEDESK is a cloud healthcare platform that makes work with patient medical data comfortable and highly effective.

MEDESK facilitates collaboration of all healthcare market players – clinics, patients, CROs, employers, insurance companies, medical device vendors. MEDESK makes this collaboration integrated, effective and more profitable. Established in 2008 we became the expert of digital healthcare market in Russia. Today our nationwide platform covering more than 100 000 patients. More than 1000 doctors, administrators and HR-specialists enjoy the benefits of our platform. We deliver integrated digital

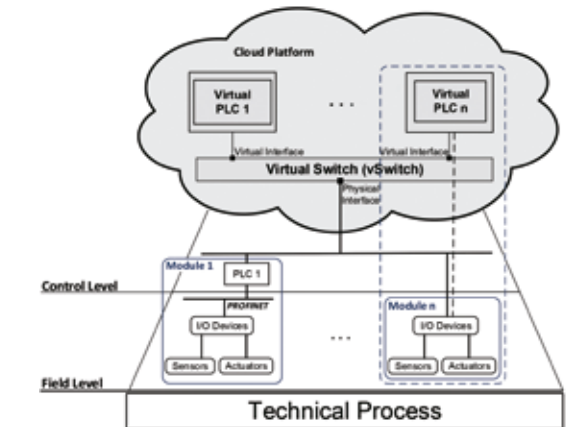
healthcare ecosystem, fully featured and customised, it can be accessed on any browser or device.

MEDESK is a successfully developing company with big perspectives, founded by two Russian IT geniuses from medical families - Vladimir Kovalskiy and Dmitry Lazutkin. MEDESK featured in Forbes Russia, Techcrunch by Mike Butcher, 1776DC newspaper, and reputable Russian business media as well as Vedomosti, Kommersant etc.

MEDESK **m**
cloud healthcare platform

MEDESK
www.medesk.md/en

INDUSTRY 4.0



INDUSTRIAL AUTOMATION SERVICES AS PART OF THE CLOUD

by InIT

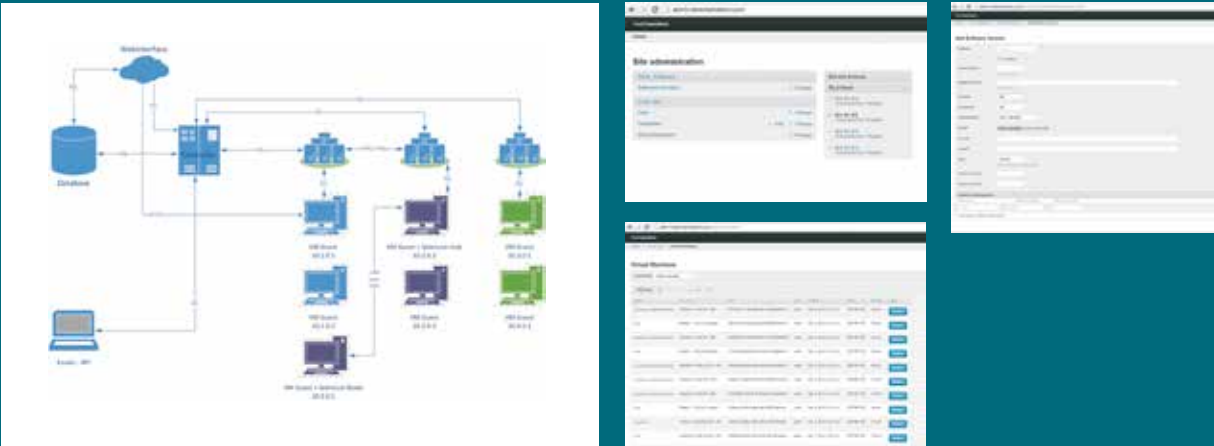
Future automation systems should meet fast growing market demands by providing agile and flexible production lines. In-addition, competitive production costs and scalability of the automation systems would be an important concern for the Industry 4.0. To achieve this, manufacturers will prefer to use high quality automation services instead of buying bunch of complex hardware and software products. The virtualization of industrial functions and realize them as a Cloud service would be a promising approach for factories of future.

This solution introduces a loosely coupled

cloud platform which hosts different automation applications with respect to some requirements such as reliability and security. Proof of concept for this solution comprises of virtual control appliances offered to the users as a service from a cloud platform via the network. Thus, plant engineers choose a desired template of an appliance from cloud portal to create a virtual instance of this appliance. This new instance will be automatically provisioned by a cloud director and placed in a cloud hypervisor. Based on application's requirements, this hypervisor can be a soft or a hard real-time hypervisor. A virtual network connects virtual appliances to physical devices and meanwhile applies security policies.



InIT - Institute of Industrial Information Technology
www.init-owl.de/en



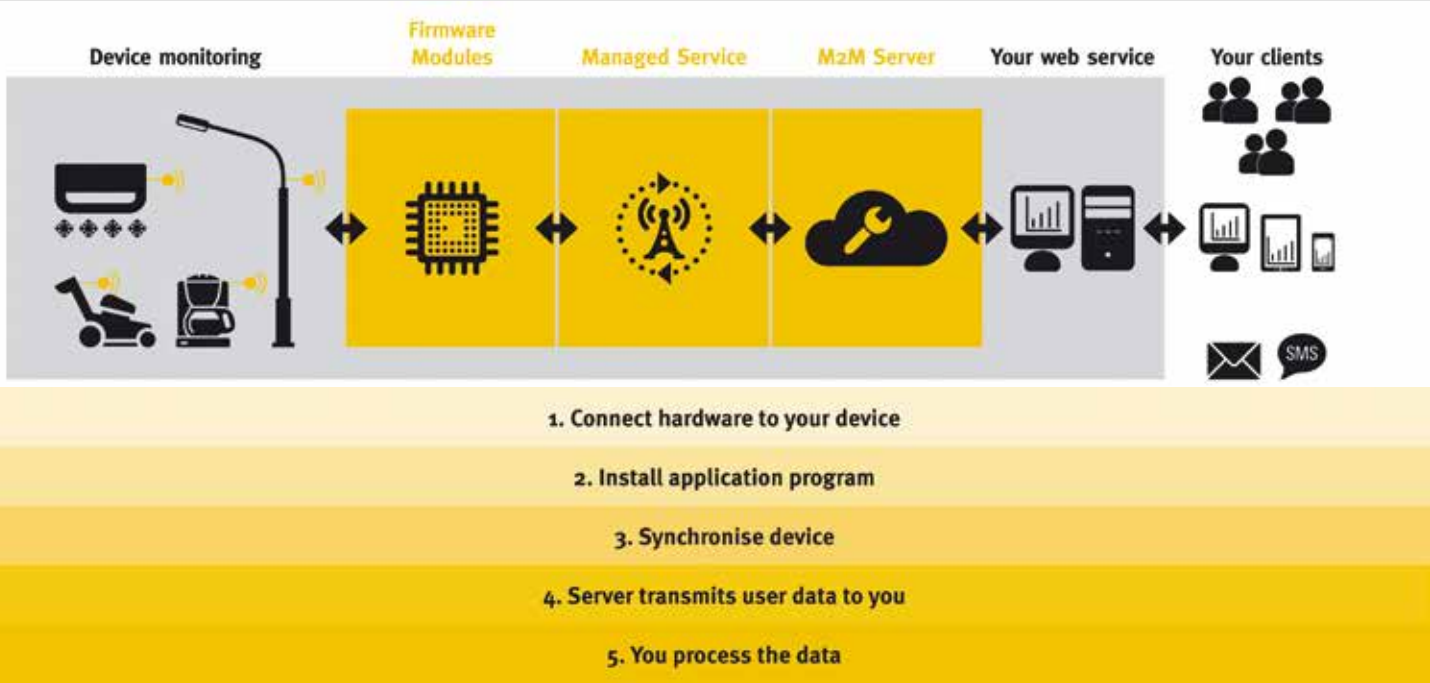
TESTCHAMELEON

by Testbirds

TestChameleon is a software as a service solution allowing companies to run every possible test environment for automated or manual software testing within minutes. Whether you need to test your web frontend compatibility with Windows XP and Internet Explorer 7 or need to check the user management under Windows 8.1, simply choose between every configuration Windows or Mac OS has to offer, including browsers, flash version and much more. You can even preinstall your own software! In addition to manual testing, TestChameleon offers an extensive API to run test cases with Selenium or HP QTP.



Testbirds GmbH
www.testbirds.de



RAPIDM2M - WIRELESS CLOUD-BASED M2M TECHNOLOGY

by Microtronics Engineering

With rapidM2M, Microtronics offers a wireless, cloud-based M2M technology customers can use worldwide to easily integrate M2M technology into various devices and machines. rapidM2M addresses manufacturers who are not familiar with M2M data transmission and application management tasks.

For this purpose, rapidM2M is compatible with a wide variety of devices or machines. Whether customers want their beverage vending machines to order supplies automatically, they would like an overview of the energy consumption of all their

street lights or they wish to offer their customers remote maintenance services for their coffee machines: rapidM2M allows for reliable and rapid implementation of custom M2M solutions.

The rapidM2M complete package consists of programmable modules for the integration into devices or machines, international GSM data transmission at a flat rate and a private or public cloud. The cloud provides manufacturers and their customers' access to user data of devices and machines and offers device management, user management as well as cost control. rapidM2M enables a bidirectional communication between devices or machines and the server. So it is not only possible to have remote access to user data but also to update programmes over the air.



Microtronics Engineering GmbH
www.microtronics.at

SPECIAL PRIZE



Special Prize GEO Award

CLOUDEO



Special Prize GEO Award

CLOUDEO

MAPS BI

by Maps BI

Maps BI is a web-based geographic business analysis platform that brings deep insight and visualization into location data. We provide a means for businesses of all sizes to increase profits through geographic analysis of their business data with zero infrastructure costs and without having to be a technical guru.

We connect automatically to your favourite cloud systems and provide dashboards around your location data for interactive exploration – think of us as an interactive info-graphic for spatial data.

Whether increasing a sales pipeline in a specific geography or examining



correlations between cardiac arrests and defibrillator locations, Maps BI provides instant visualization of a business' state of affairs – providing the capacity to quickly identify issues.

MAPS BI

Maps BI Inc.
www.mapsbi.com

DASH - DRIVE SMART by Dash Labs

Dash Labs, Inc
www.dashmobile.co

For more information
please see page 5.

dash

THE VENIOS ENERGY SOLUTION by Venios

Venios GmbH
www.venios.de

For more information
please see page 2.

VENIOS
Uniting IT and Energy

SPECIAL PRIZE



Special Prize Evolve Insurance Award



Special Prize Evolve Insurance Award



MEDESK CLOUD HEALTHCARE PLATFORM

by MEDESK



MEDESK is a cloud healthcare platform that makes work with patient medical data comfortable and highly effective.

healthcare ecosystem, fully featured and customised, it can be accessed on any browser or device.

MEDESK facilitates collaboration of all healthcare market players – clinics, patients, CROs, employers, insurance companies, medical device vendors. MEDESK makes this collaboration integrated, effective and more profitable. Established in 2008 we became the expert of digital healthcare market in Russia. Today our nationwide platform covering more than 100 000 patients. More than 1000 doctors, administrators and HR-specialists enjoy the benefits of our platform. We deliver integrated digital

MEDESK is a successfully developing company with big perspectives, founded by two Russian IT geniuses from medical families – Vladimir Kovalskiy and Dmitry Lazutkin. MEDESK featured in Forbes Russia, Techcrunch by Mike Butcher, 1776DC newspaper, and reputable Russian business media as well as Vedomosti, Kommersant etc.

MEDESK
cloud healthcare platform

MEDESK
www.medesk.md/en



Special Prize
Evolve Insurance Award



GOOPTI – INTELLIGENT
PASSENGER
TRANSPORTATION

by TM Vista

GoOpti is an award-winning cloud SaaS platform for smart organization of passenger transportation, which offers affordable (low cost) shuttle transfers with a disruptive business model.

GoOpti system utilizes cloud assisted demand responsive transportation services focusing on yield management, using tailored mathematical optimization models based on machine learning - to optimize vehicle occupancy in both directions, while trying to achieve lowest fare for passengers at a high revenue for the carrier. Specialized cloud back-office SaaS application, together with simple step-by-step online and mobile marketplace, facilitates rapid internationalization based on tailored franchising model. The innovativeness of the business model was proven with two Slovenian awards:



Best innovative business model of 2013 and Best innovative and Creative tourism achievement of 2012. The solution has an enormous market potential, recognized by 11,000+ passengers per month, with an exceptional growth of revenue and customers, and new international partners. GoOpti cloud solution consists of the responsive elastic single entry-point multilingual web application (front office), search engine (marketplace), optimization and BI layer, and back office cloud SaaS application. It bridges e-commerce (front office) application with smart back office solution adapted for international franchises.



TM Vista d.o.o.
www.goopti.com



Special Prize
Evolve Insurance Award



MONBABY. PESONAL
HEALTH DASHBOARD

by Mondevices

It's a web-based cloud application that collects, stores and processes data from wearable devices about the personal activity of babies, elders or sick people. Application then associates this activity with events that may have an impact on health and displays results in a form of personalized health dashboard. The stats on activity dial will include:

- Breathing cycle
- Activity level
- Sleep pattern and activity during the night
- Activity classification and recognition: fall detection, shakes, problems with breathing at night

An application will display on a browser a visual log of child's or senior's activity during the day and sleep patterns during the night. Our initial implementation is

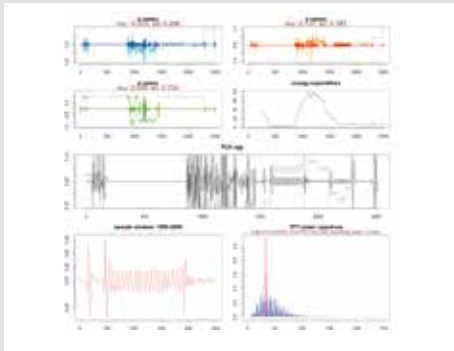
focused on just one dial, motion dial, on that dashboard that will display activity and motion data. The data is sourced from our own technology, smart button sensors that can be attached to any article of clothing.

A final implementation will be integrating other data channels provided by third-party sensors and wearable devices with our activity dial.

Final dashboard will display the following health stats:

- Blood pressure
- Oxygen in a blood
- Pulse
- Free text entry with automated timestamp (blood sugar for diabetics)

The result is your personal health dashboard, where you could see your day and sleep activity along with important health stats side by side and share this information with your family, caregivers or with your favourite health-care professional.



Mondevices Inc.
www.mondevices.com

DASH -
DRIVE SMART

by Dash Labs

Dash Labs, Inc
www.dashmobile.co

For more information
please see page 5.



Sponsors & Partners



Contact Cloud Innovation World Cup

Navispace AG

+49 (8152) 982 22 50

www.innovationworldcup.com/cloud