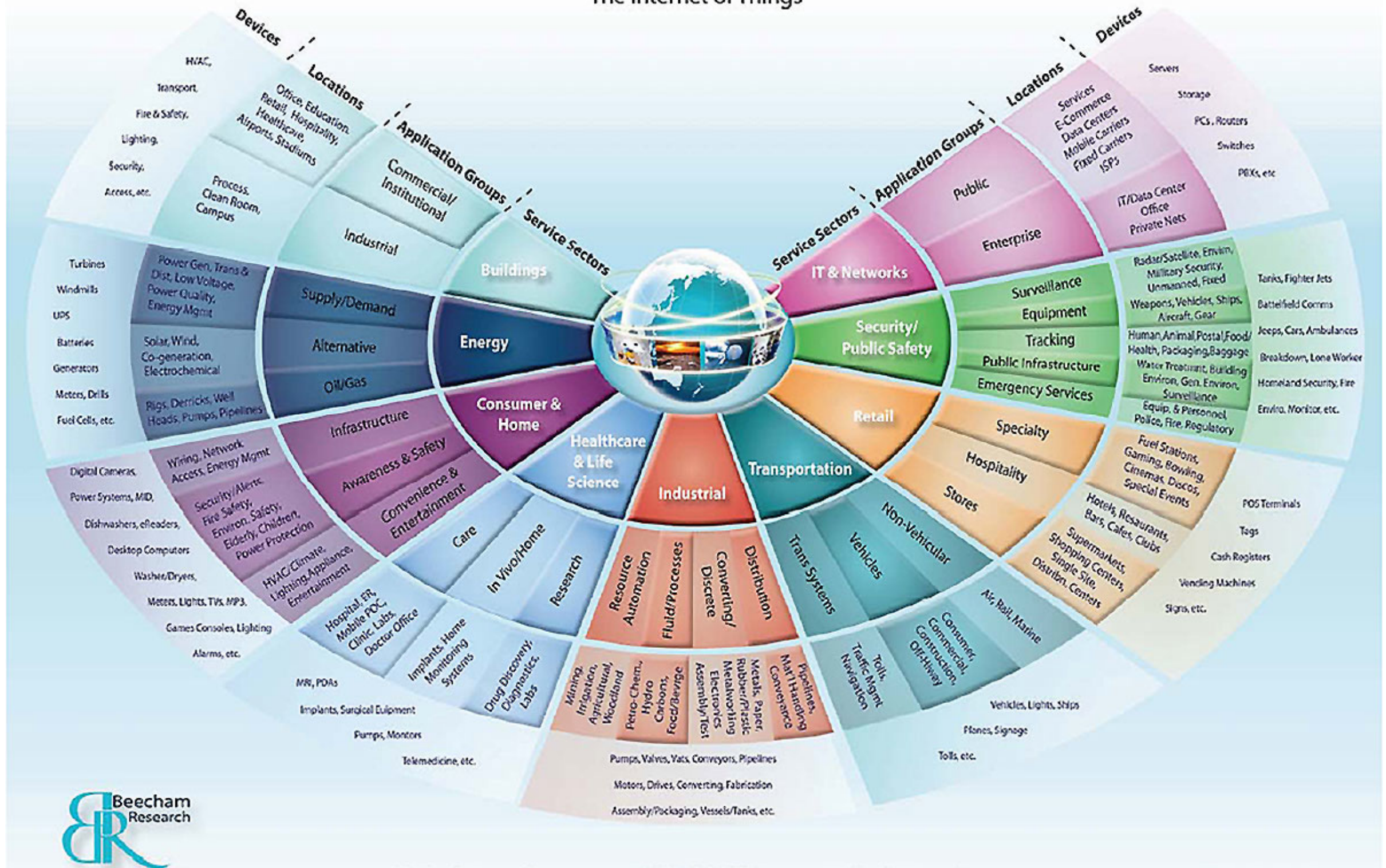


How do the device know where they are?

Mats Lindoff Co-Founder Combain

Smart World Event Malmö September 2014

The Internet of Things

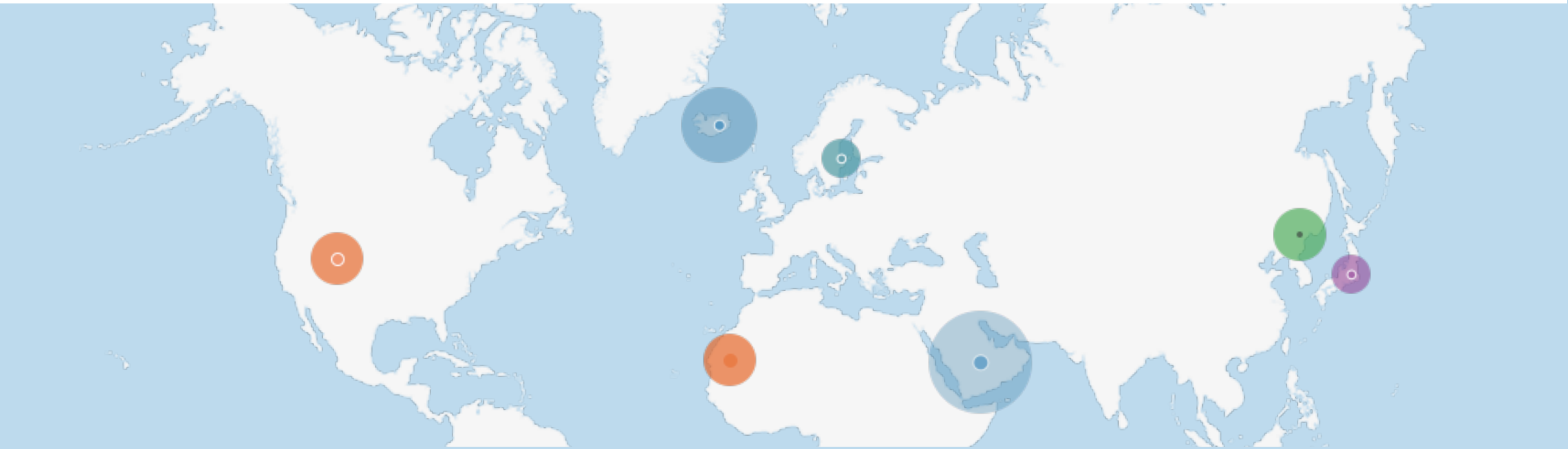


Combain Positioning Service

- Submit cell-id and wifi, get latitude, longitude & accuracy
- Instant and accurate

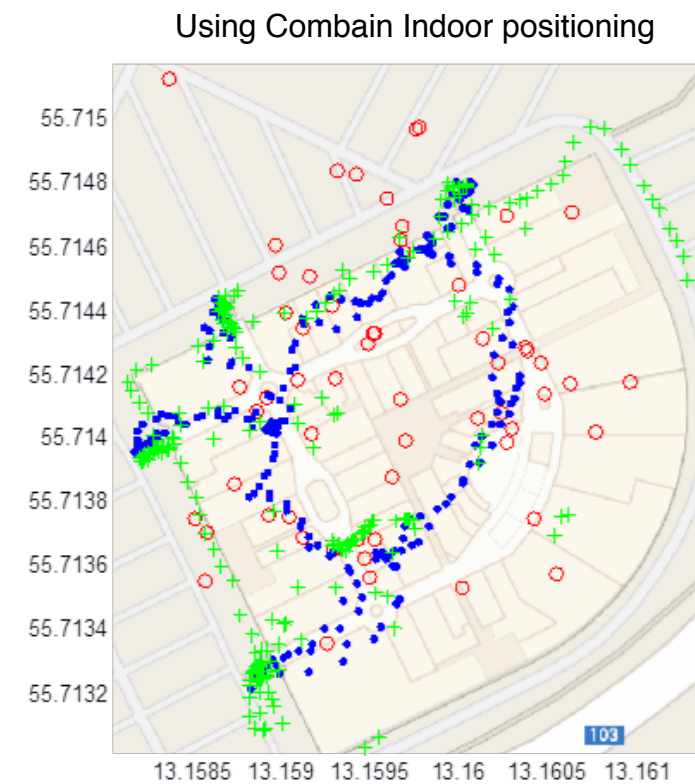
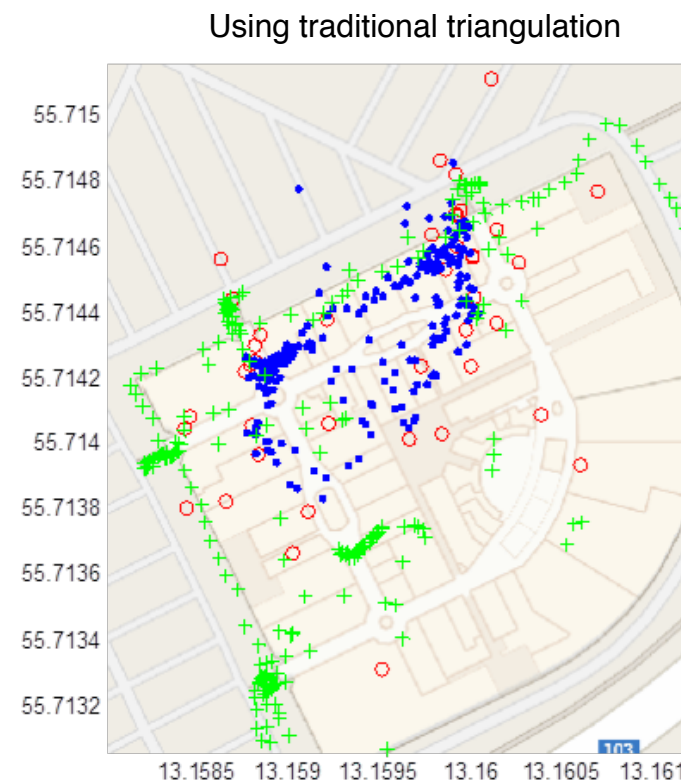
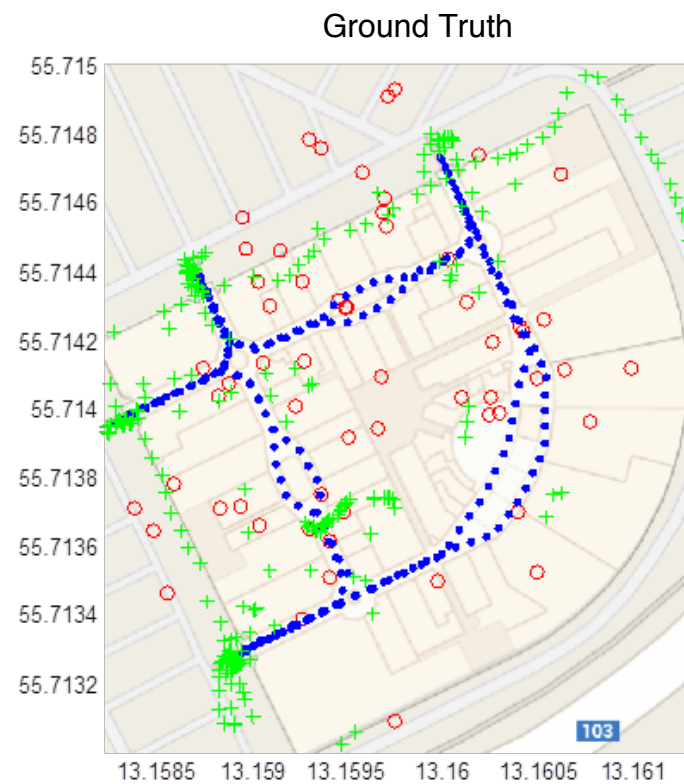


- Cloud-based API for positioning
- The data based is crowd source



Global Coverage - One API

- 47+ million cell-ids
- 430+ million wifis
- 200 countries
- 1000 operators



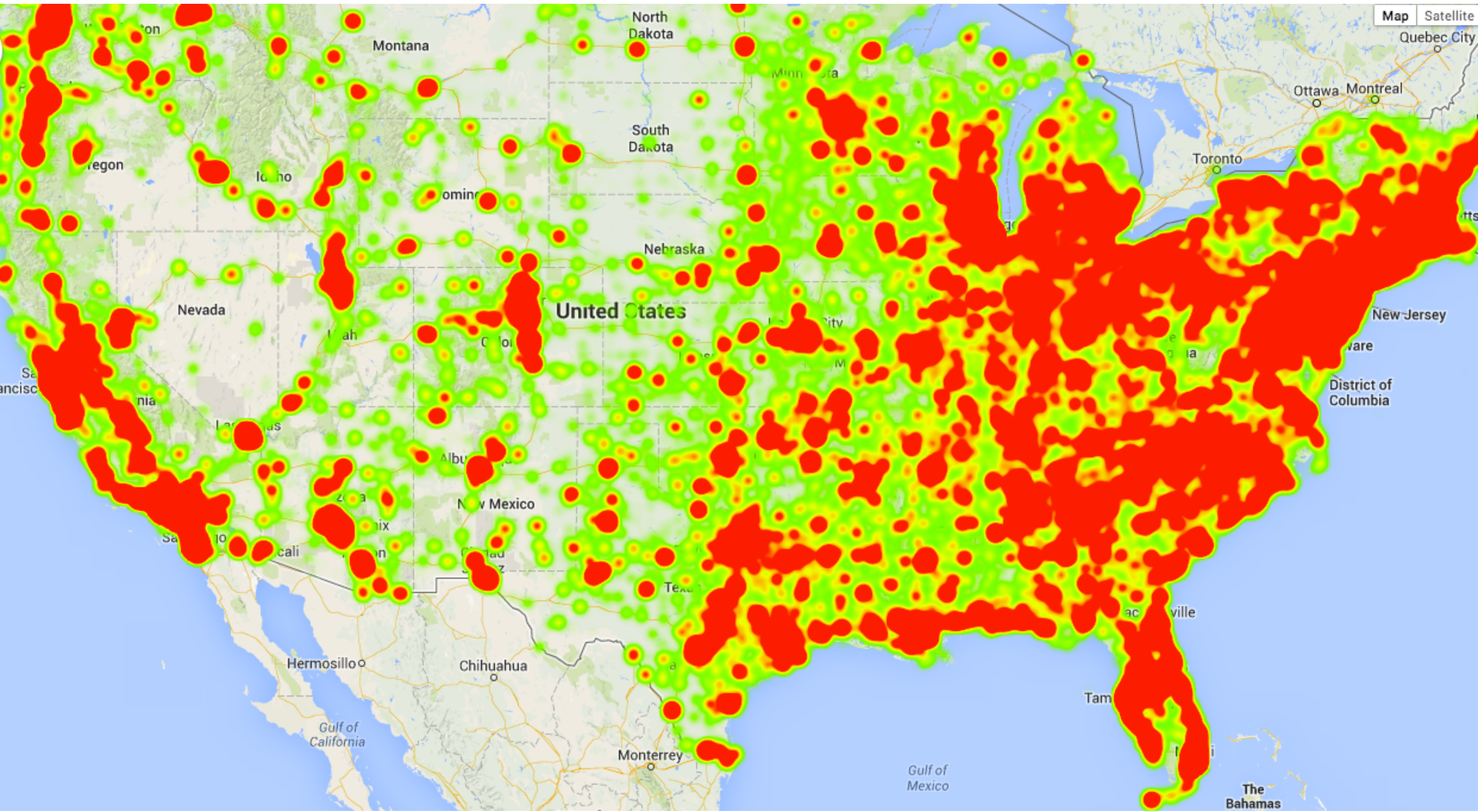
Indoor Location

- Globally optimized indoor location
- No time consuming venue specific learning and calibration
- All algorithms based on globally crowd-sourced data
- Median error indoor location: ~10 meters



Accurate

- 98% coverage rate for cell-id
- 90% coverage rate for wifi
- Global urban median error for cell-id: ~200 meters
- Global median error for wifi: ~40 meters
- Median error indoor wifi: ~10 meters



#WIFICOVERAGEUSA

#WIFICOVERAGEBAYAREA



Combain Mobile

Scheelevägen 15, 223 70 Lund
Sweden

www.combain.com

info@combain.com

+46 46 288 6 288

Twitter: @combain

Backup



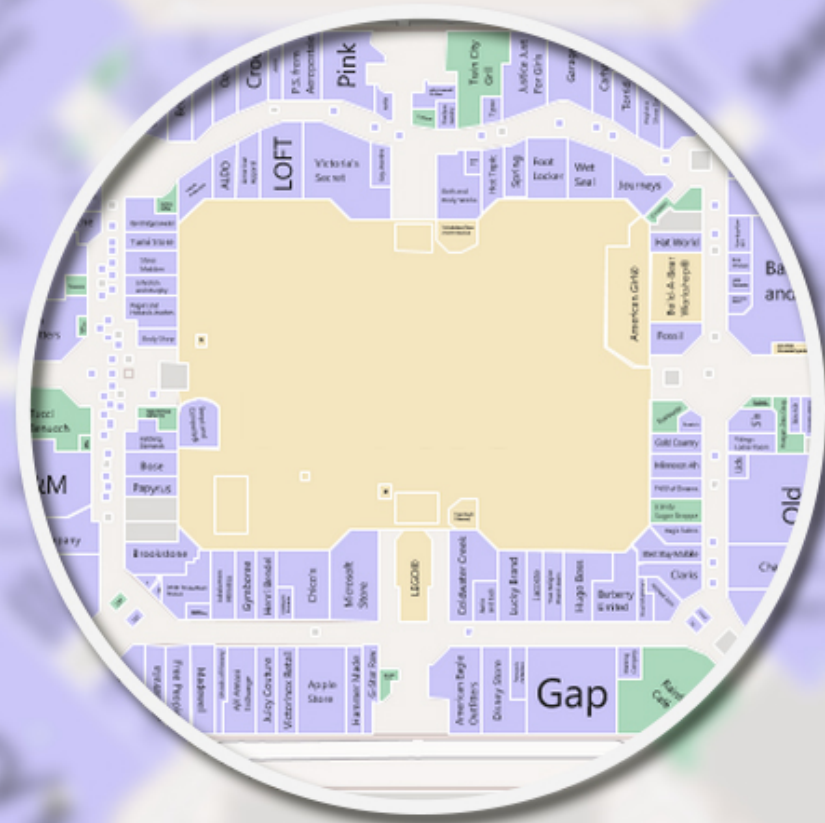
Use-cases & Customers

- M2M Device Manufacturers (indoor location, replace or complement GPS)
- Handsets Manufacturers (indoor location, complement to GPS)
- Operators (extends their M2M offer, locate their infrastructure)
- Service Providers (extends their M2M platforms with positioning)



Offerings

- CPS API - cloud-based location look-up API
- CPS Indoor - state-of-the-art indoor location
- CPS Embedded - download tiles to perform positioning offline
- Professional services - big-data & coverage analysis



Offline Positioning

- Download tiles of positioning data
- Your mobile client or server performs positioning offline
- No confidential look-ups needs to be sent over internet
- Power efficient and instant with no look-ups over internet